



PARTS CATALOG

Published

2008/7 (Jul.)

0CNP3-G65900

ESPECIFICACIONES

Modelo		T3250
Motore	Modelo	GA90SCSA
	tipo	OHV (4 tempi benzina)
	potenza	3.0/4000
	avviamento	a fune autoavvolgente
Dimensioni	lunghezza mm	1610
	larghezza mm	680
	altezza mm	1015
Peso	Kg.	150
Piattaf. carico dimensioni	lunghezza mm	920/1120
	larghezza mm	615/1050
	altezza	150
Portata max	Kg.	(250) 300
Sollev. pianale	Kg.	manuale
Trasmissione	n.marce.	2 avani + 1 retro
	frizione	a tensione a cinghia
	freno	ad espansione interna
Carro cingolato	appoggio mm	580
	larghezza mm	180
	interasse	440
Tendicingolo		a molla
Velocità :	1A	1,7
	2A	3,6
	1R	2,1
	2R	-

CONTENTS

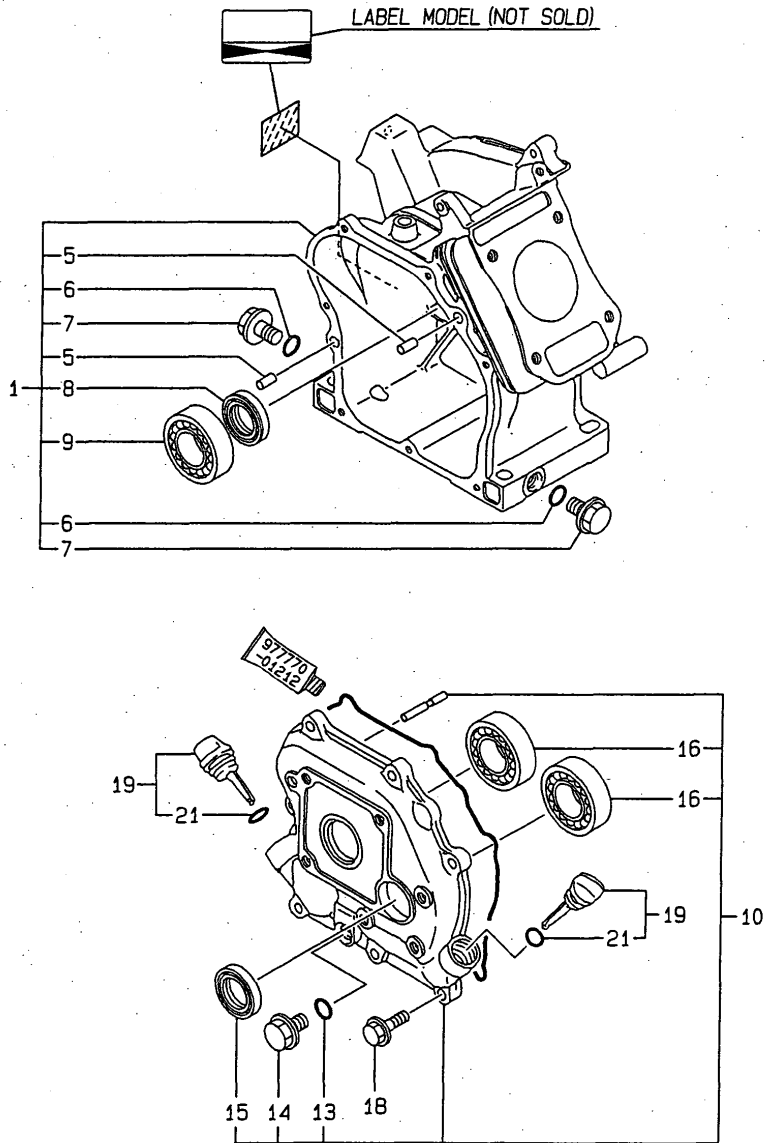
MODEL : T3250(.
PC NO : 0CNP3-G65900

Fig.No.	GROUP NAME
	ENGINE UNIT(GA90E-SCSA)
1.	CYLINDER BLOCK
2.	CYLINDER HEAD & BONNET
3.	TOOL & LABEL
4.	AIR CLEANER & MUFFLER
5.	CRANKSHAFT,PISTON & CAMSHAFT
6.	FUEL OIL TANK & FUEL OIL LINE
7.	CARBURETOR
8.	GOVERNOR & CONTROL DEVICE
9.	FLY.MAGNET & STARTING DEVICE
	BODY SECTION
10.	FRAME
11.	CONTROL SECTION
12.	PLATFORM CARRIER
	TRANSMISSION UNIT
13.	TRANSMISSION

Fig.No. GROUP NAME

Fig.1. CYLINDER BLOCK

1. CYLINDER BLOCK



OCNP3-G65900 1. CYLINDER BLOCK

(A)=GA90E-SCSA

(B)=

(C)=

(D)=

(E)=

(F)=

REF.	LEV.	PARTS NO.	DESCRIPTION	QTY						I	R
				(A)	(B)	(C)	(D)	(E)	(F)		
1	1	760490-01562	BLOCK ASSY, CYLINDER	1							
5	2	114270-01600	PARALLEL PIN 8X12	2							
6	2	24311-000100	O-RING 1A P-10.0	2							
7	2	26106-100162	BOLT M10X 16 PLATED	2							
8	2	160510-02220	SEAL, OIL	1							
9	2	24101-062030	BALL BEARING	1							
10	1	760490-01500	COVER, CRANKCASE	1							
13	2	24311-000100	O-RING 1A P-10.0	1							
14	2	26106-100162	BOLT M10X 16 PLATED	1							
15	2	160510-02220	SEAL, OIL	1							
16	2	24101-062030	BALL BEARING	2							
18	1	26476-060202	BOLT M 6X 20, TAPPING	7							
19	1	160611-01740	CAP ASSY	2							
21	2	24311-000150	O-RING 1A P-15.0	2							

Remarks

(REMARKS) "EFFECTIVE MACHINE NO." OF ENGINE IS INDICATED ON THE ENGINE LABEL WHICH IS SHOWN IN FIG.1.

Fig.2. CYLINDER HEAD & BONNET

(A)=GA90E-SCSA

(B)=

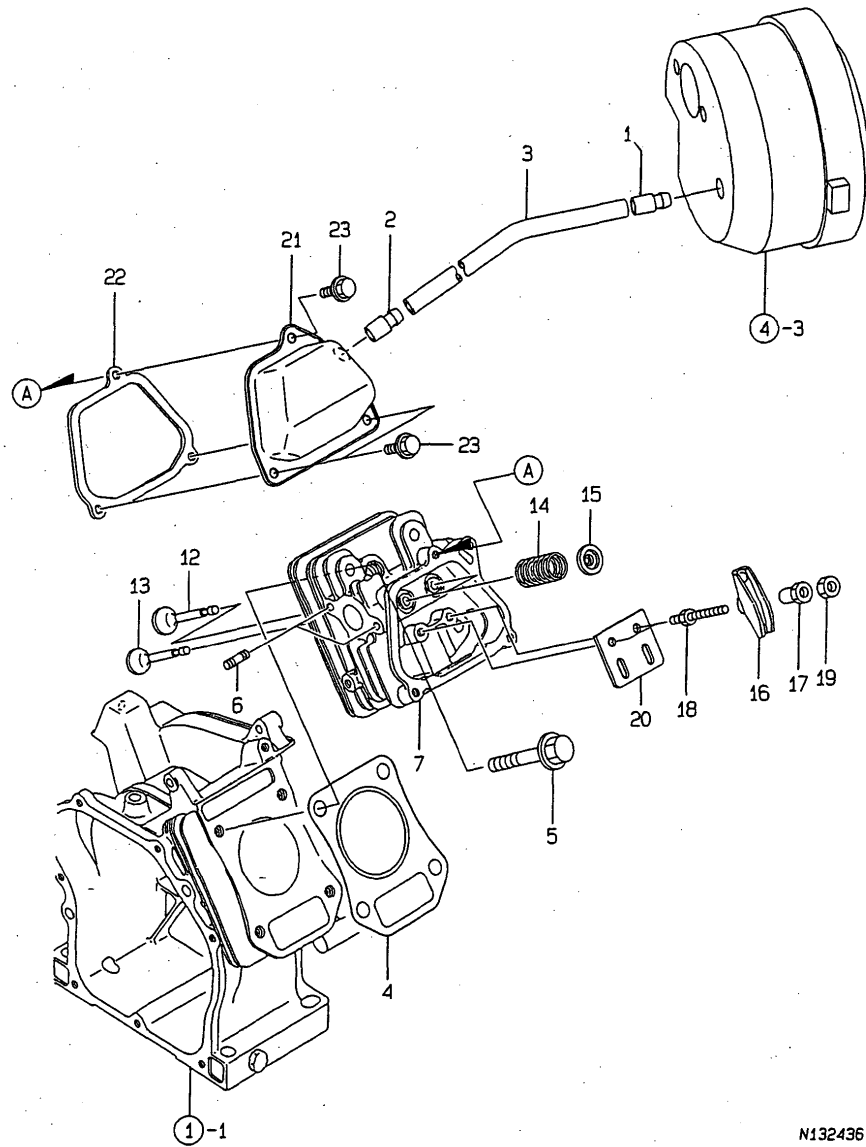
(C)=

(D)=

(E)=

(F)=

2. CYLINDER HEAD & BONNET



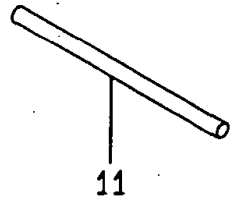
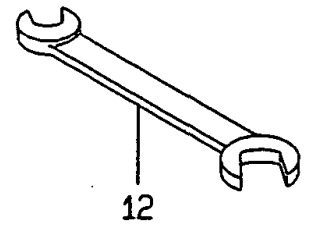
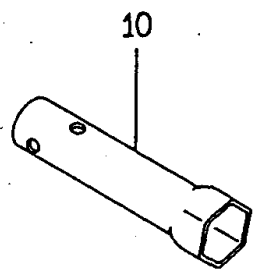
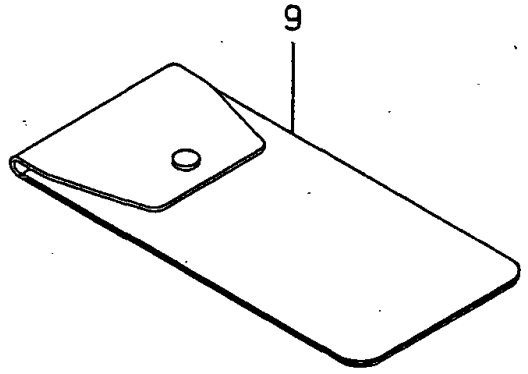
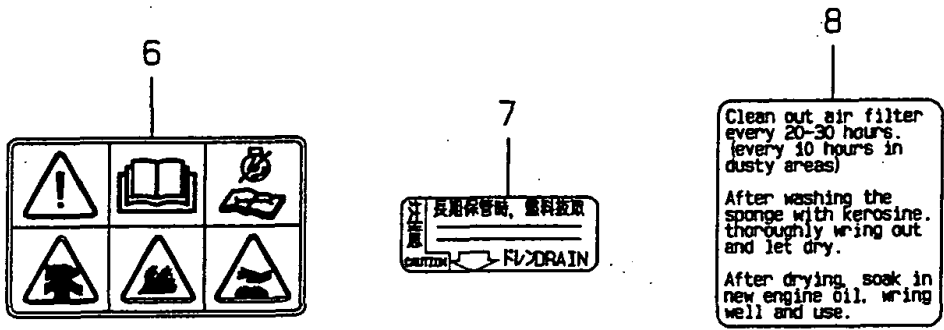
N132436

Remarks
 (REMARKS)"EFFECTIVE MACHINE NO." OF
 ENGINE IS INDICATED ON THE
 ENGINE LABEL WHICH IS SHOWN
 IN FIG.1.

REF.	LEV.	PARTS NO.	DESCRIPTION	QTY						I	R
				(A)	(B)	(C)	(D)	(E)	(F)		
1	1	160520-03050	BREATHER.MT.	1							
2	1	160610-03050	BREATHER ASSY	1							
3	1	160510-03180	PIPE, BREATHER	1							
4	1	160498-01330	GASKET, CYL. HEAD	1							
5	1	160610-04201	BOLT M 8X 53	4							
6	1	160610-04620	BOLT M6X 16	2							
7	1	160490-11010	HEAD ASSY, CYLINDER	1							
12	1	160664-11100	INLET VALVE	1							
13	1	160664-11110	EXHAUST VALVE	1							
14	1	160490-11120	SPRING, VALVE	2							
15	1	160664-11180	RETAINER, VALVE	2							
16	1	160699-11200	ARM,VALVE ROCKER	2							
17	1	160690-11221	PIVOT,ROCKER ARM	2							
18	1	160690-11271	BOLT	2							
19	1	160690-11280	NUT M6X 0.5	2							
20	1	160490-11290	GUIDE PLATE	1							
21	1	160490-11300	BONNET	1							
22	1	160490-11310	GASKET, BONNET	1							
23	1	26476-060142	BOLT M 6X 14,TAPPING	3							

Fig.3. TOOL & LABEL

3. TOOL & LABEL



Remarks
 (REMARKS)"EFFECTIVE MACHINE NO." OF
 ENGINE IS INDICATED ON THE
 ENGINE LABEL WHICH IS SHOWN
 IN FIG.1.

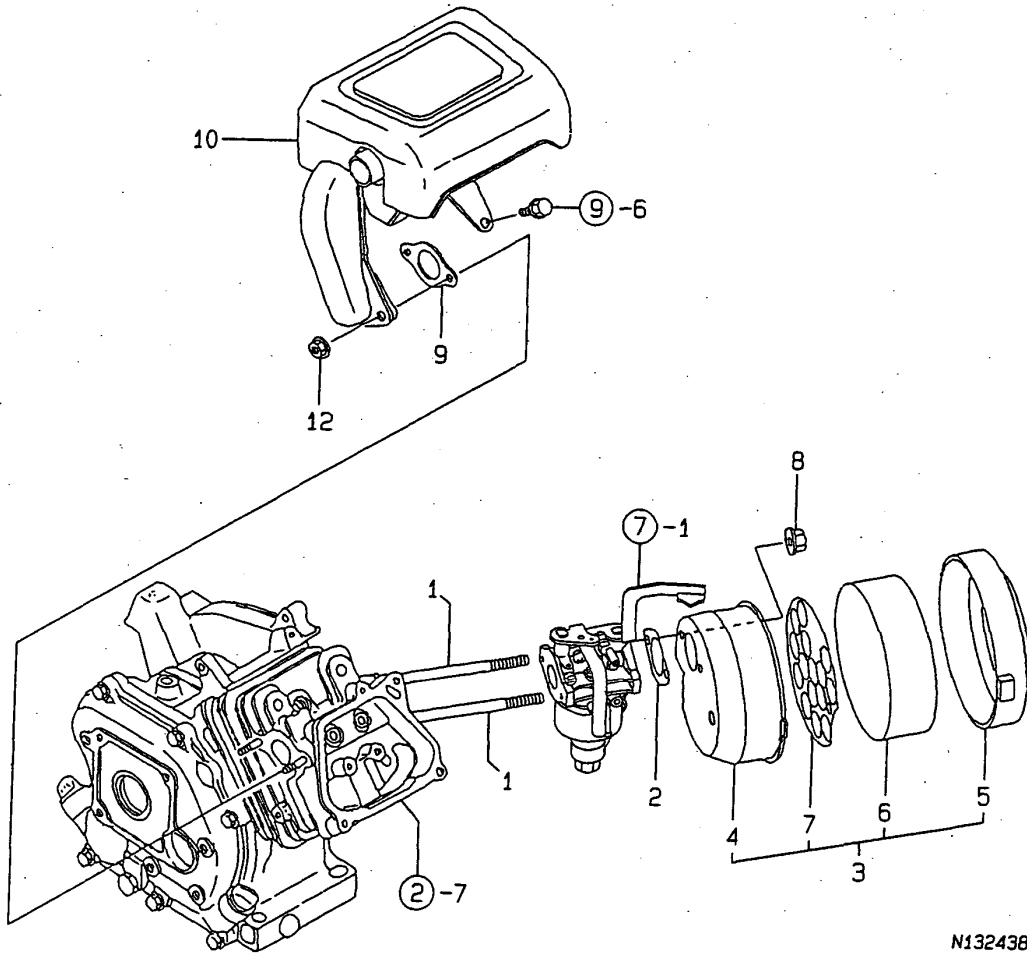
(A)=GA90E-SCSA
 (B)=
 (C)=

(D)=
 (E)=
 (F)=

REF.	LEV.	PARTS NO.	DESCRIPTION	QTY						I	R
				(A)	(B)	(C)	(D)	(E)	(F)		
6	1	160991-07260	LABEL	1							
7	1	160520-07272	LABEL, DRAIN	1							
8	1	160664-07370	LABEL, AIR CLEANER	1							
9	1	160110-92610	BAG, TOOL	1							
10	1	160120-92700	SPANNER, BOX	1							
11	1	160110-92710	BAR	1							
12	1	28110-100120	WRENCH 10X12	1							

Fig.4. AIR CLEANER & MUFFLER

4. AIR CLEANER & MUFFLER



N132438

OCNP3-G65900 4. AIR CLEANER & MUFFLER

(A)=GA90E-SCSA

(B)=

(C)=

(D)=

(E)=

(F)=

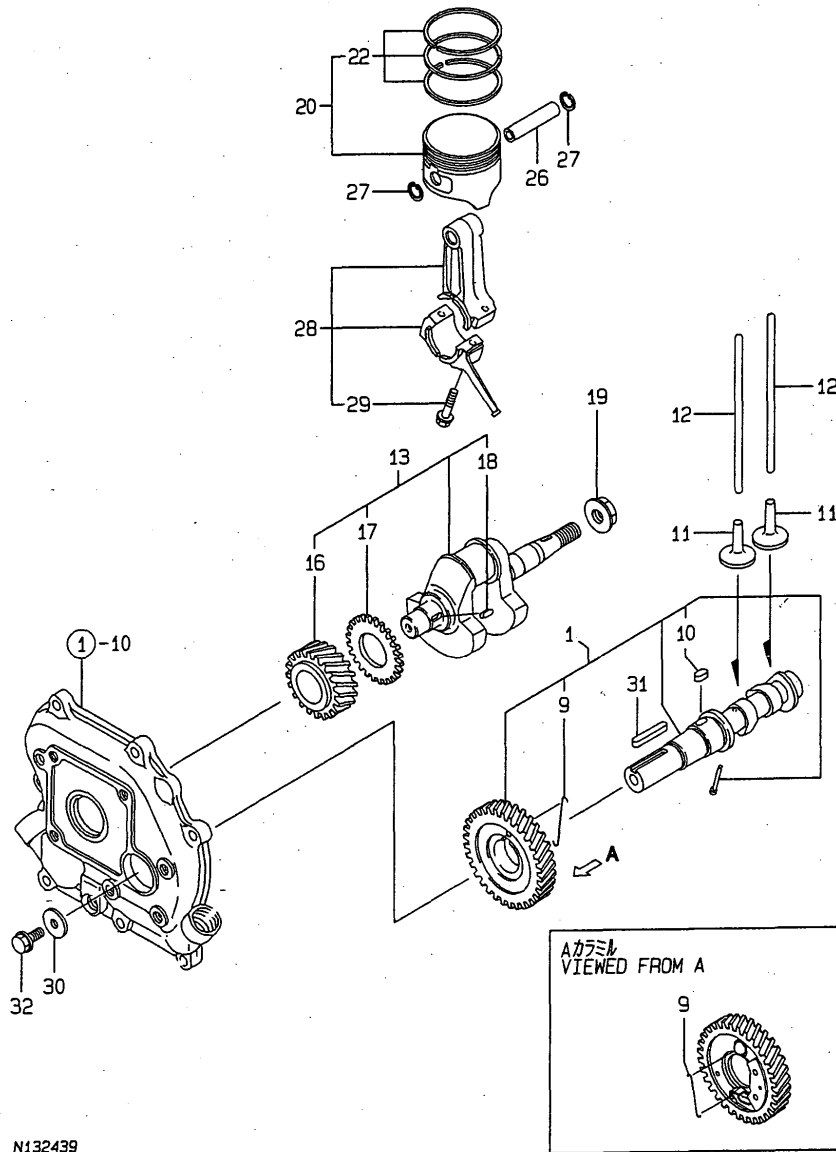
REF.	LEV.	PARTS NO.	DESCRIPTION	QTY						I	R	
				(A)	(B)	(C)	(D)	(E)	(F)			
1	1	160610-04570	BOLT M 6X 70	2								
2	1	160762-12050	GASKET, IN. MANIFOLD	2								
3	1	160490-12500	CLEANER ASSY, AIR	1								
4	2	160490-12520	BODY, AIR CLEANER	1								
5	2	160610-12530	CAP, AIR CLEANER	1								
6	2	160610-12540	ELEMENT, AIR CLEANER	1								
7	2	160610-12550	HOLDER, ELEMENT	1								
8	1	26366-060002	NUT M 6	2								
9	1	160510-13200	GASKET, MUFFLER	1								
10	1	160498-13550	MUFFLER ASSY	1								
12	1	26366-060002	NUT M 6	2								

Remarks

(REMARKS)"EFFECTIVE MACHINE NO." OF ENGINE IS INDICATED ON THE ENGINE LABEL WHICH IS SHOWN IN FIG.1.

Fig.5. CRANKSHAFT,PISTON & CAMSHAFT

5. CRANKSHAFT,PISTON & CAMSHAFT



N132439

Remarks
 (REMARKS)"EFFECTIVE MACHINE NO." OF
 ENGINE IS INDICATED ON THE
 ENGINE LABEL WHICH IS SHOWN
 IN FIG.1.

OCNP3-G65900 5. CRANKSHAFT,PISTON & CAMSHAFT

(A)=GA90E-SCSA

(B)=

(C)=

(D)=

(E)=

(F)=

REF.	LEV.	PARTS NO.	DESCRIPTION	QTY						I	R
				(A)	(B)	(C)	(D)	(E)	(F)		
1	1	160498-14050	CAMSHAFT ASSY	1							
9	2	160611-14560	SPRING	1							
10	2	114250-21290	KEY 4X 7	1							
11	1	160490-14200	TAPPET	2							
12	1	160490-14400	ROD,PUSH	2							
13	1	760490-21700	CRANKSHAFT ASSY	1							
16	2	160530-21200	GEAR, CRANKSHAFT	1							
17	2	160590-21210	GEAR, IDLE	1							
18	2	160610-21290	KEY 4X 10	1							
19	1	26376-120002	U-NUT M12	1							
20	1	160490-22010	PISTON ASSY	1							
22	2	760490-22500	RING SET, PISTON	1							
26	1	160490-22300	PIN, PISTON	1							
27	1	22252-000120	CIRCLIP 12	2							
28	1	160490-23030	ROD ASSY, CONNECTING	1							
29	2	26106-060302	BOLT M 6X 30 PLATED	2							
30	1	160510-14550	WASHER	1							
31	1	160810-21290	KEY 4X24	1							
32	1	26106-060162	BOLT M 6X 16 PLATED	1							

Fig.6. FUEL OIL TANK & FUEL OIL LINE

(A)=GA90E-SCSA

(B)=

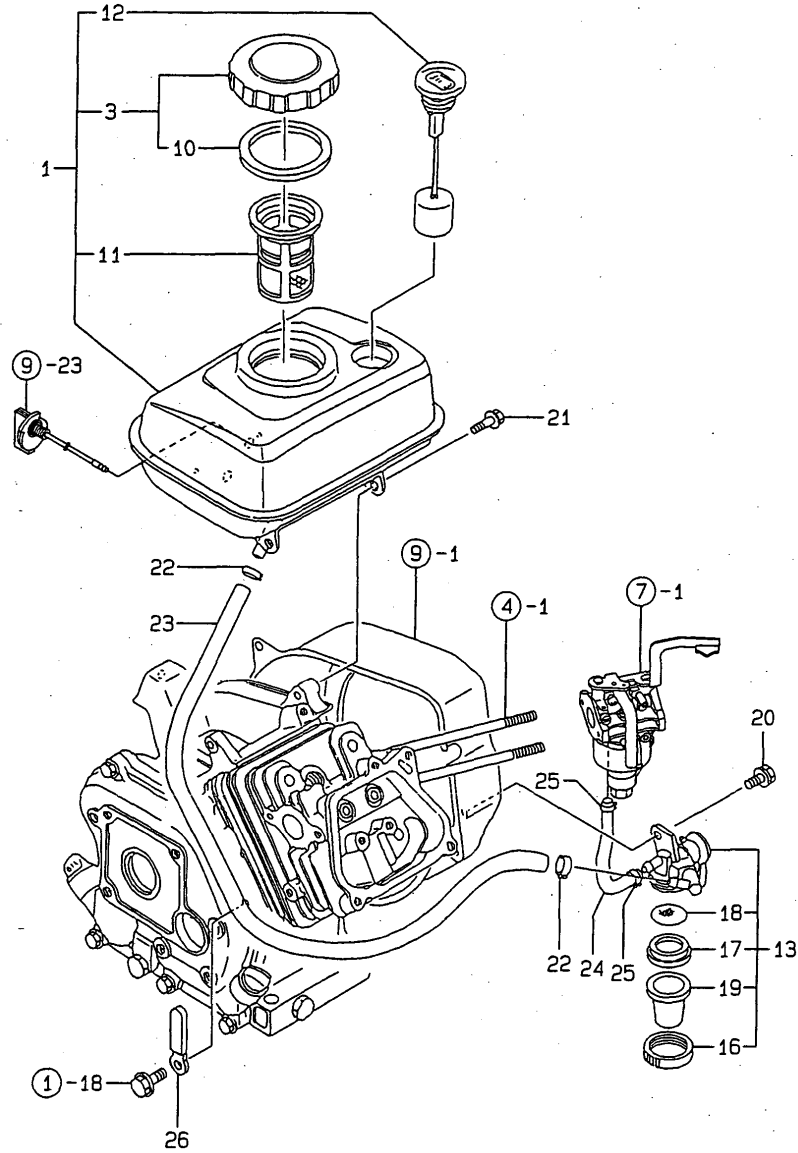
(C)=

(D)=

(E)=

(F)=

6. FUEL OIL TANK & FUEL OIL LINE



REF.	LEV.	PARTS NO.	DESCRIPTION	QTY						I	R
				(A)	(B)	(C)	(D)	(E)	(F)		
I	1	760490-55700-1	TANK,FUEL (RED)(50)	1							
	3	160710-55061	CAP ASSY, FUEL TANK	1							
	10	160393-55050	GASKET, TANK CAP	1							
	11	160610-55100	STRAINER	1							
	12	160708-55150	GAUGE, FUEL	1							
	13	160692-55300	COCK ASSY, FUEL	1							
	16	160710-55360	RING	1							
	17	160710-55370	GASKET	1							
	18	160710-55382	FILTER	1							
	19	160710-55390	BOWL, STRAINER	1							
	20	26106-060102	BOLT M 6X 10 PLATED	1							
	21	26476-060142	BOLT M 6X 14,TAPPING	3							
	22	106990-44660	CLIP,HOSE	2							
	23	160490-59350	HOSE, FUEL (A-340)	1							
	24	160490-59360	HOSE, FUEL (B-145)	1							
	25	124060-77680	CLAMP 10	2							
	26	160260-78700	CLAMP, CORD	1							

Remarks
 (REMARKS)"EFFECTIVE MACHINE NO." OF
 ENGINE IS INDICATED ON THE
 ENGINE LABEL WHICH IS SHOWN
 IN FIG.1.

Fig.7. CARBURETOR

(A)=GA90E-SCSA

(B)=

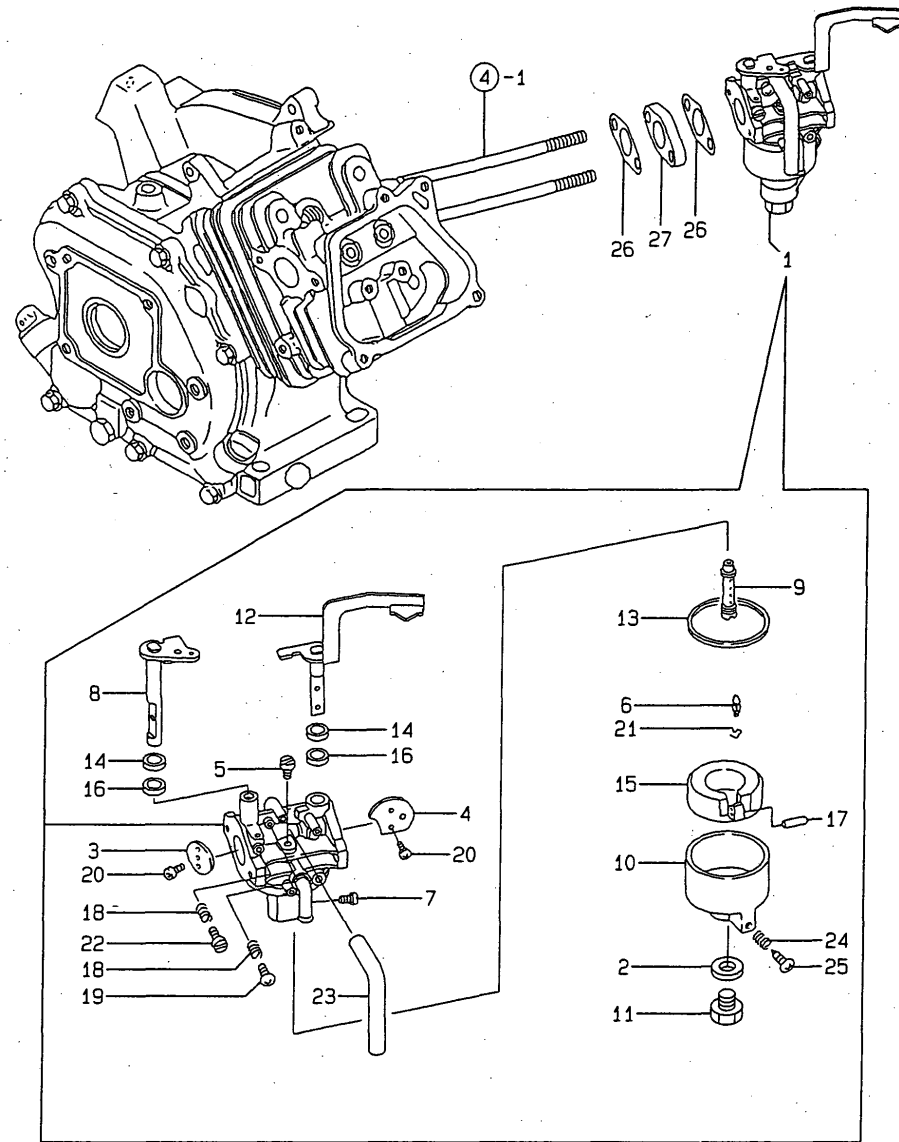
(C)=

(D)=

(E)=

(F)=

7. CARBURETOR



REF.	LEV.	PARTS NO.	DESCRIPTION	QTY						I	R
				(A)	(B)	(C)	(D)	(E)	(F)		
1	1	160490-56011	CARBURETOR ASSY	1							
2	2	160495-56600	GASKET	1							
3	2	160492-56520	VALVE, THROTTLE	1							
4	2	160492-56530	VALVE	1							
5	2	160492-56540	JET, PILOT	1							
6	2	160492-56550	NEEDLE	1							
7	2	160495-56561	JET, MAIN	1							
8	2	160492-56570	SHAFT ASSY, THROTTLE	1							
9	2	160492-56581	NOZZLE, MAIN	1							
10	2	160490-56590	BODY, FLOAT	1							
11	2	160490-56600	BOLT	1							
12	2	160492-56610	SHAFT, CHOKE	1							
13	2	160510-56610	GASKET	1							
14	2	160492-56620	GASKET	2							
15	2	160510-56620	FLOAT ASSY	1							
16	2	160492-56630	SEAL	2							
17	2	160610-56630	PIN, FLOAT	1							
18	2	181130-56640	SPRING	2							
19	2	160692-56710	SCREW	1							
20	2	160710-56710	SCREW	3							
21	2	160769-56720	CLAMP	1							
22	2	160667-56750	SCREW, ADJUSTING	1							
23	2	160692-56770	HOSE	1							
24	2	181230-56380	SPRING	1							
25	2	160610-56900	SCREW	1							
26	1	160667-56151	GASKET, CARBURETOR	2							
27	1	160667-56160	SPACER, CARBURETOR	1							

Remarks
 (REMARKS) "EFFECTIVE MACHINE NO." OF
 ENGINE IS INDICATED ON THE
 ENGINE LABEL WHICH IS SHOWN
 IN FIG.1.

Fig.8. GOVERNOR & CONTROL DEVICE

(A)=GA90E-SCSA

(B)=

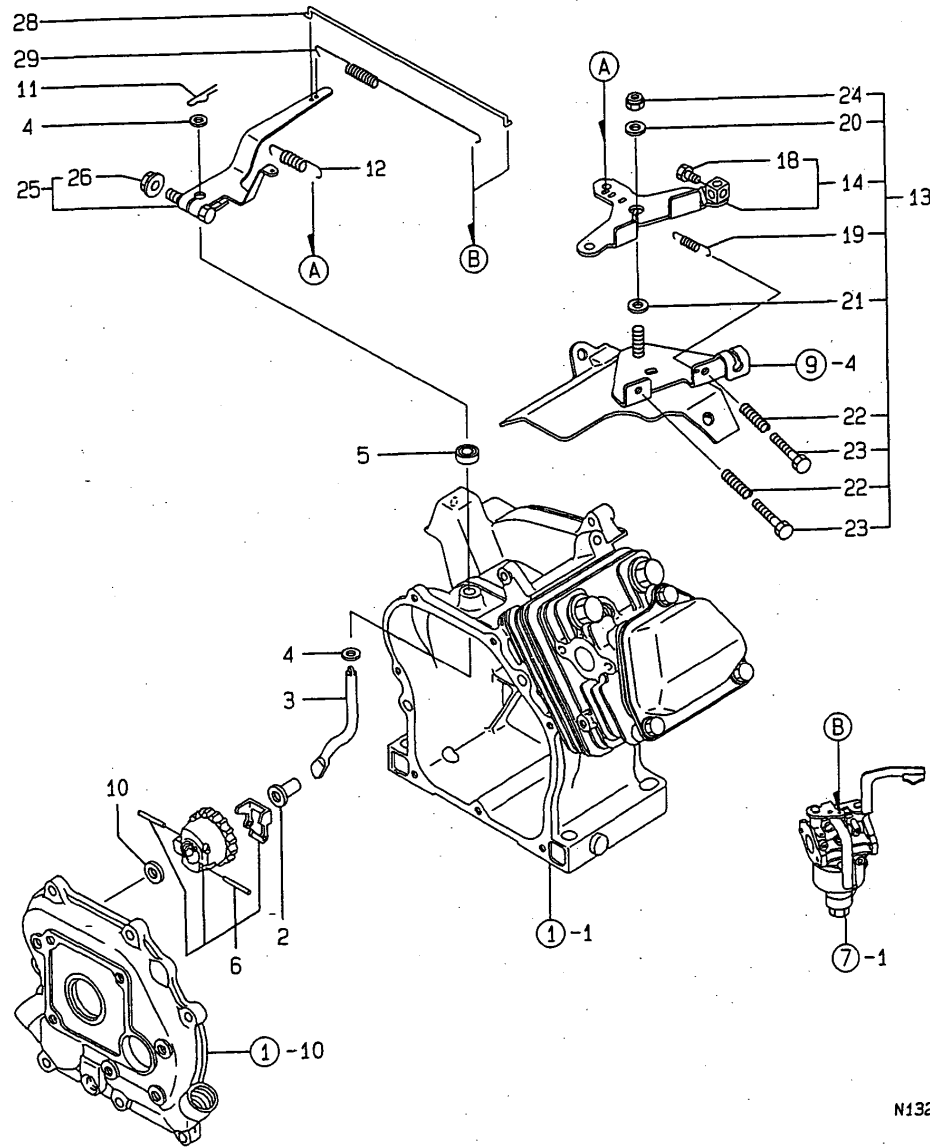
(C)=

(D)=

(E)=

(F)=

8. GOVERNOR & CONTROL DEVICE



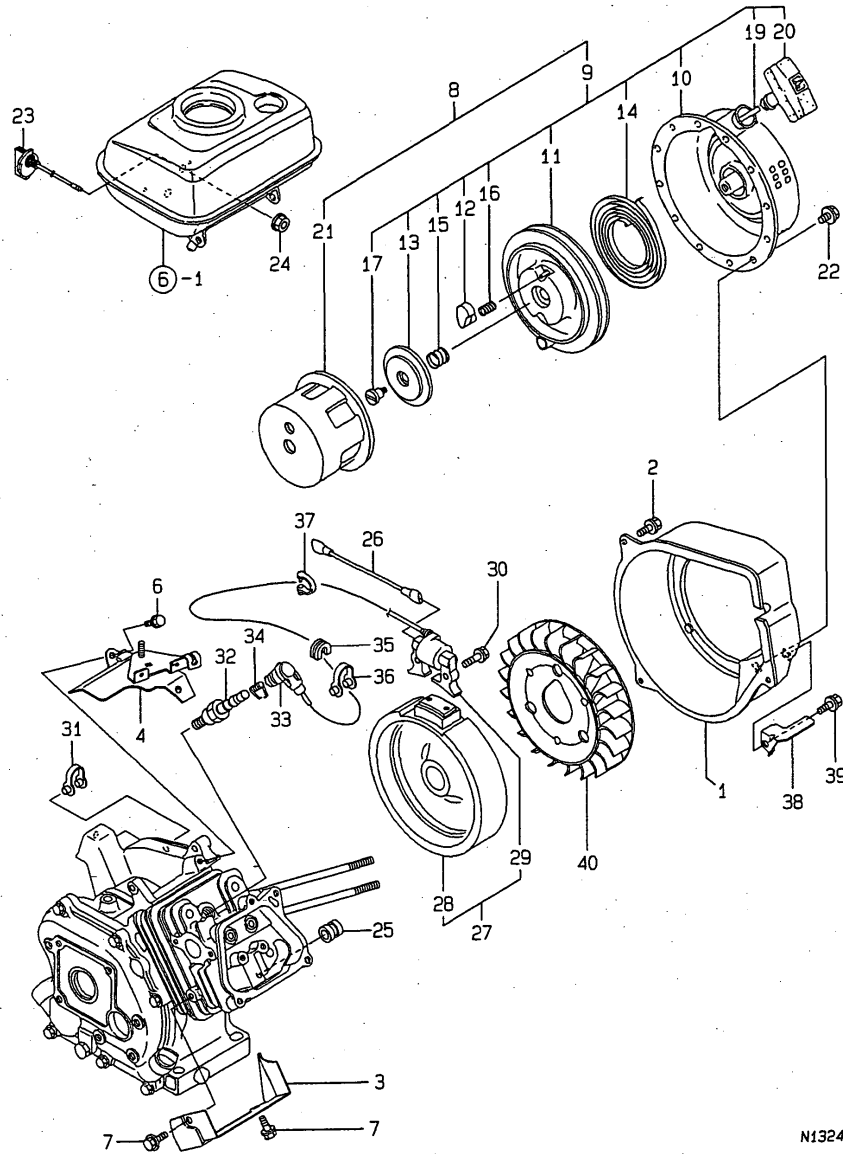
N132442

Remarks
 (REMARKS) "EFFECTIVE MACHINE NO." OF
 ENGINE IS INDICATED ON THE
 ENGINE LABEL WHICH IS SHOWN
 IN FIG.1.

REF.	LEV.	PARTS NO.	DESCRIPTION	QTY						I	R
				(A)	(B)	(C)	(D)	(E)	(F)		
2	1	160690-61301	SPINDLE, GOVERNOR	1							
3	1	160690-61311	SHAFT, GOV. LEVER	1							
4	1	160690-61450	WASHER	2							
5	1	114770-61600	SEAL, OIL	1							
6	1	160690-61600	GEAR ASSY, GOV.	1							
10	1	160120-76940	WASHER	1							
11	1	22372-080000	SNAP PIN (JASO 8)	1							
12	1	160490-66020	SPRING	1							
13	1	160492-66100	CONTROL ASSY	1							
14	2	160692-66051	LEVER ASSY, CONTROL	1							
18	3	26117-040088	BOLT M 4X 8 PLATED	1							
19	2	160664-66220	SPRING, RETURN	1							
20	2	160670-66350	COLLAR	1							
21	2	160120-76940	WASHER	1							
22	2	160520-66291	SPRING	2							
23	2	26117-040257	BOLT M 4X 25	2							
24	2	26347-060002	U-NUT M 6	1							
25	1	160490-66190	LEVER, GOVERNOR	1							
26	2	26366-060002	NUT M 6	1							
28	1	160490-66200	LINK, THROTTLE	1							
29	1	160490-66211	SPRING	1							

Fig.9. FLY.MAGNET & STARTING DEVICE

9. FLY.MAGNET & STARTING DEVICE



Remarks
 (REMARKS)"EFFECTIVE MACHINE NO." OF
 ENGINE IS INDICATED ON THE
 ENGINE LABEL WHICH IS SHOWN
 IN FIG.1.

OCNP3-G65900 9. FLY.MAGNET & STARTING DEVICE

(A)=GA90E-SCSA

(B)=

(C)=

(D)=

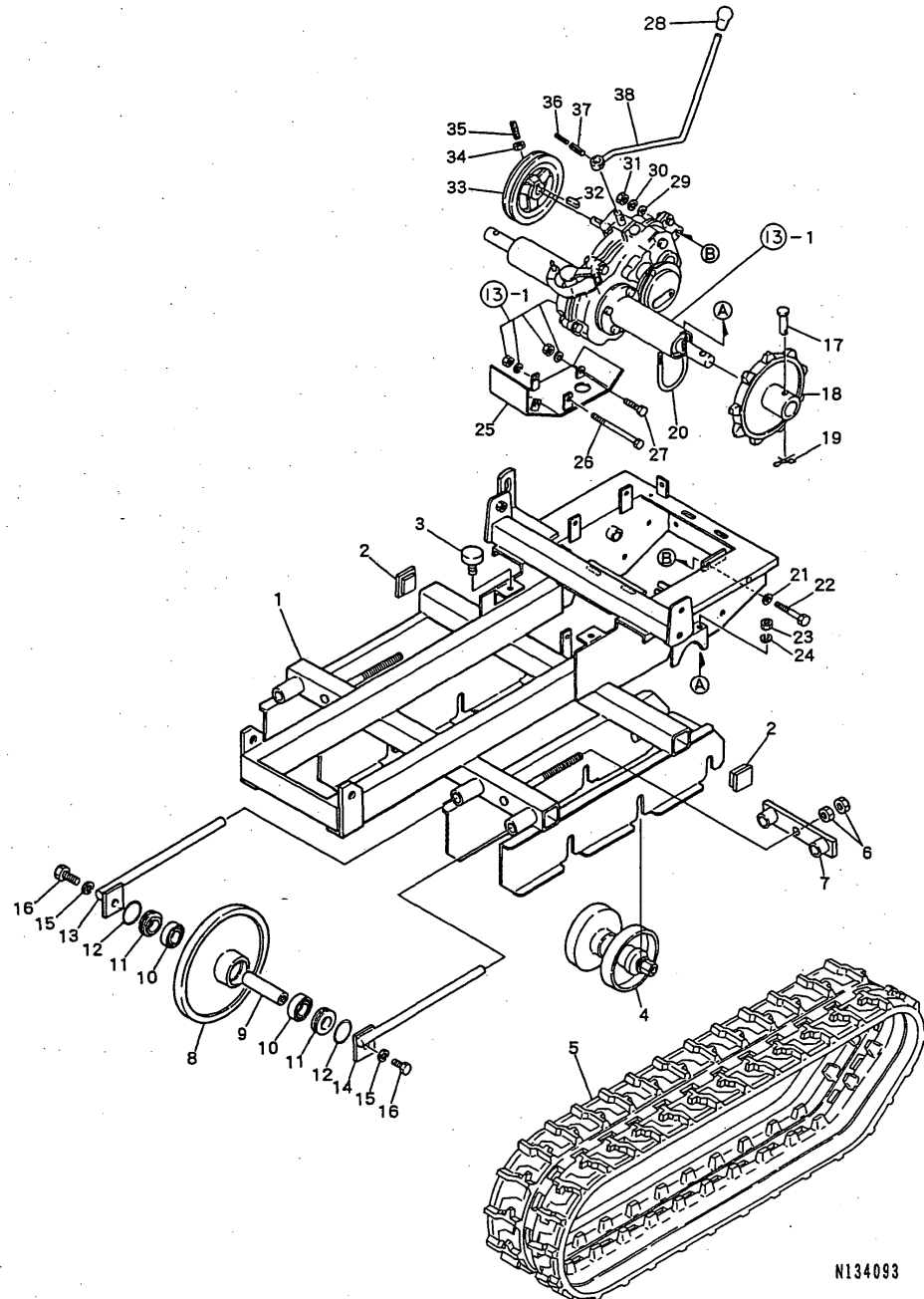
(E)=

(F)=

REF.	LEV.	PARTS NO.	DESCRIPTION	QTY						I	R
				(A)	(B)	(C)	(D)	(E)	(F)		
1	1	160490-45140	CASE, FAN (WHITE:14)	1							
2	1	26476-060142	BOLT M 6X 14,TAPPING	3							
3	1	160490-45230	COVER, CYLINDER	1							
4	1	160490-45220	HEAD, CYLINDER	1							
6	1	26476-060142	BOLT M 6X 14,TAPPING	2							
7	1	26476-060142	BOLT M 6X 14,TAPPING	2							
8	1	160490-76051	STARTER ASSY, RECOIL	1							
9	2	160490-76251	RE-COIL STARTER	1							
10	3	160490-76611	CASE ASSY, STARTER	1							
11	3	160490-76511	REEL	1							
12	3	160690-76801	RATCHET	2							
13	3	160690-76531	GUIDE, RATCHET	1							
14	3	160690-76540	SPRING, SPIRAL	1							
15	3	160690-76561	SPRING, FRICTION	1							
16	3	160690-76570	SPRING, RETURN	2							
17	3	160698-76580	SETSCREW	1							
19	3	160490-76580	ROPE, STARTER	1							
20	3	160490-76600	KNOB, STARTER	1							
21	2	160490-76591	PULLEY, STARTER	1							
22	1	26106-060082	BOLT M 6X 8 PLATED	4							
23	1	160611-77250	SWITCH, STOP	1							
24	1	26366-080002	NUT M 8	1							
25	1	160341-01950	PIPE	1							
26	1	160490-78230	CORD, STOP	1							
27	1	160490-78090	FLYWHEEL MAGNETO	1							
28	2	160490-78540	ROTOR	1							
29	2	160490-78550	COIL, LIGHTING	1							
30	1	26476-060302	BOLT M 6X 30,TAPPING	2							
31	1	29610-000650	CLAMP, SPEED 065	2							
32	1	160793-78010	PLUG, SPARK	1							
33	1	160700-78040	CAP, PLUG	1							
34	1	160700-78050	TERMINAL, PLUG	1							
35	1	160700-78720	GROMMET	1							
36	1	29610-000950	CLAMP, SPEED 095	1							
37	1	29610-001400	CLAMP	1							
38	1	160490-45240	GUIDE, COOLING AIR	1							
39	1	26476-060142	BOLT M 6X 14,TAPPING	1							
40	1	160490-45010	FAN, COOLING	1							

Fig.10. FRAME

10. FRAME



N134093

(A)=T3250

(B)=

(C)=

(D)=

(E)=

(F)=

REF.	LEV.	PARTS NO.	DESCRIPTION	QTY						I	R
				(A)	(B)	(C)	(D)	(E)	(F)		
1	1	G41410020000	FRAME	1							
2	1	G46746230100	CAP,RUBBER 40*40*3.5	4							
3	1	G46376512000	RUBBER,CUSSION	2							
4	1	G40850160100	TRUCK ROLLER 120 ASS	6							
5	1	G46496203000	CRAWLER 180W*34L*60P	2							
6	1	G40020100016	NUT M16	4							
7	1	G41400120200	PLATE,TENSION	2							
8	1	G41410120000	ADLE,FRONT	2							
9	1	G48501081000	SHAFT,FRONT ADLE	2							
10	1	G4010146005A	BEARING 6005	4							
11	1	G46016511000	COLLAR,DUST	4							
12	1	G40052300450	O-RING G45	4							
13	1	G41500120000	ROD,TENSION(R)	2							
14	1	G41500120100	ROD,TENSION(L)	2							
15	1	G40027100012	WASHER M12	4							
16	1	G40010111225	BOLT M12*25(8T)	4							
17	1	G40031311055	PIN 10*60	2							
18	1	G41410120100	SPROCKET	2							
19	1	G40031199010	PIN,STOPPPER 10	2							
20	1	G46492070000	U-BOLT	2							
21	1	G40026100010	WASHER M10	2							
22	1	G40100000060	BOLT M10*65	1							
23	1	G40020100008	NUT M8	4							
24	1	G40027100008	WASHER M8	4							
25	1	G46494950000	PROTECT	1							
26	1	G40101008105	BOLT M8*105	2							
27	1	G40100000017	BOLT M8*35	1							
28	1	G46006030000	GLIP10(BK)	1							
29	1	G40026100010	WASHER M10	1							
30	1	G40027100010	WASHER M10	1							
31	1	G40020100010	NUT M10	1							
32	1	G40300000015	KEY 5*5*20	1							
33	1	G46492300010	PULLEY	1							
34	1	G40020100008	NUT M8	2							
35	1	G40160000830	SCREW M8*30	2							
36	1	G40030300325	PIN,SPRING 3*25	1							
37	1	G40030300525	PIN,SPRING 5*25	1							
38	1	G46492330001	LEVER,SHIFT	1							

Fig.11. CONTROL SECTION

(A)=T3250

(B)=

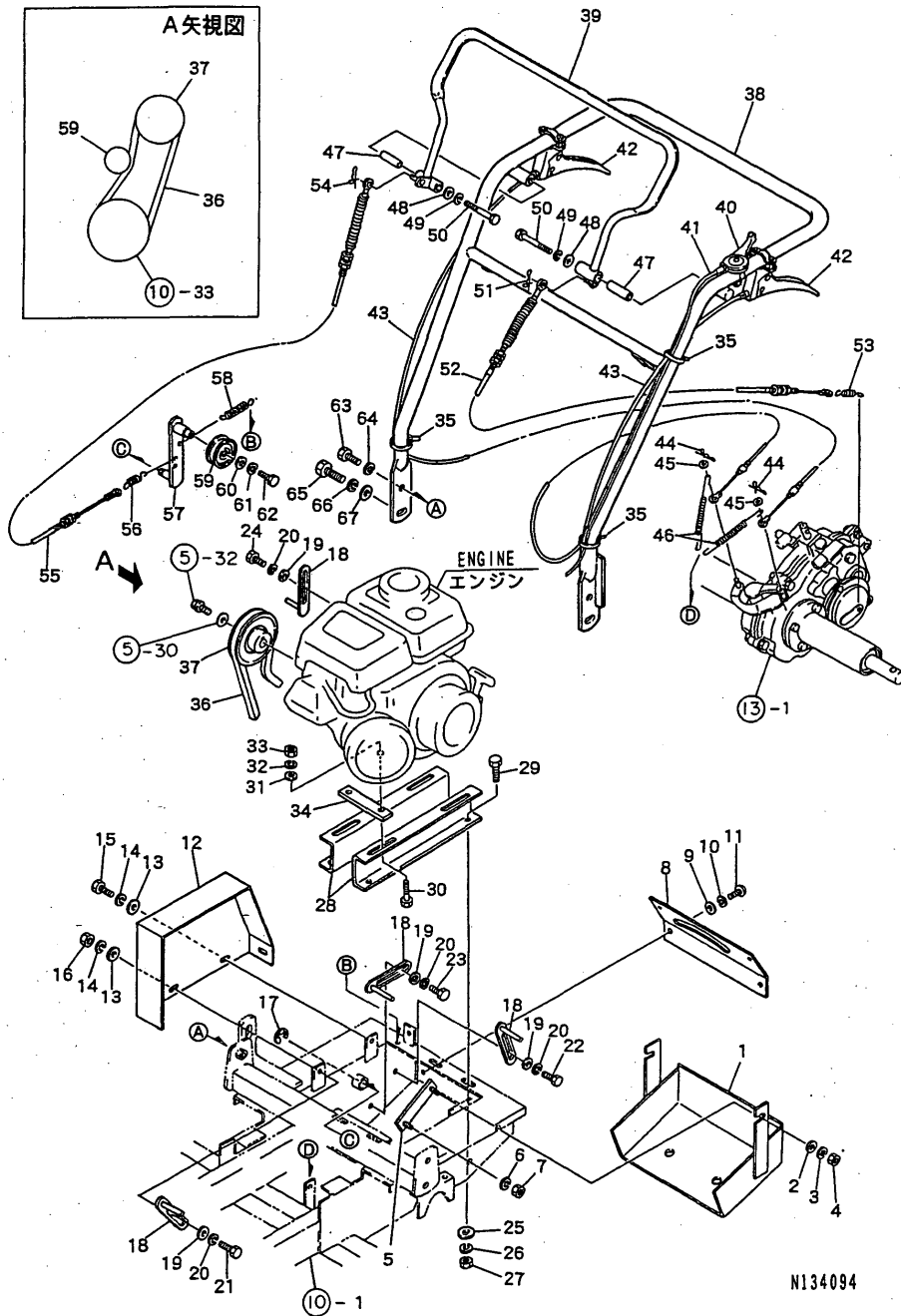
(C)=

(D)=

(E)=

(F)=

11. CONTROL SECTION



REF.	LEV.	PARTS NO.	DESCRIPTION	QTY						I	R
				(A)	(B)	(C)	(D)	(E)	(F)		
1	1	G40701121000	COVER	1							
2	1	G40026100008	WASHER M8	2							
3	1	G40027100008	WASHER M8	2							
4	1	G40020100008	NUT M8	2							
5	1	G40701121100	BOLT,COVER	1							
6	1	G40027100008	WASHER M8	1							
7	1	G40020100008	NUT M8	1							
8	1	G46492650000	GUIDE,SHIFT	1							
9	1	G40026100006	WASHER M6	4							
10	1	G40027100006	WASHER M6	4							
11	1	G40160000616	SCREW M6*16	4							
12	1	G41411120000	COVER,BELT	1							
13	1	G40026100008	WASHER M8	3							
14	1	G40027100008	WASHER M8	3							
15	1	G40010100816	BOLT M6*16	2							
16	1	G40020100008	NUT M8	1							
17	1	G40036800012	RING,STOP E12	1							
18	1	G46062370010	STOPPER,BELT	4							
19	1	G40026100008	WASHER M8	4							
20	1	G40027100008	WASHER M8	4							
21	1	G40100000015	BOLT M8*25	1							
22	1	G40100000017	BOLT M8*35	1							
23	1	G40010100818	BOLT M6*18	1							
24	1	G40010100816	BOLT M6*16	1							
25	1	G40026100008	WASHER M8	4							
26	1	G40027100008	WASHER M8	4							
27	1	G40020100008	NUT M8	4							
28	1	G46744290150	BASE,ENGINE	2							
29	1	G40010100820	BOLT M8*20	4							
30	1	G40010100845	BOLT M8*45	4							
31	1	G40026100008	WASHER M8	4							
32	1	G40027100008	WASHER M8	4							
33	1	G40020100008	NUT M8	4							
34	1	G46012720000	PLATE	2							
35	1	G40329060000	CLAMP,WIRE	5							
36	1	G40080300035	V-BELT B35	1							
37	1	G41412220000	PULLEY,ENGINE	1							
38	1	G41416020000	HANDLE	1							
39	1	G41416020100	LEVER,TRACKSION	1							
40	1	G46666132000	LEVER,SROTLLE	1							
41	1	G46066043000	WIRING	1							
42	1	G46496130000	LEVER,SIDE CLUTCH	2							
43	1	G46496040022	WIRING	2							
44	1	G40031199006	PIN 6,STPRD.STRAIGHT	2							
45	1	G40026100006	WASHER M6	2							
46	1	G46062104010	SPRING	2							
47	1	G41416020200	COLLAR	2							
48	1	G47022200010	WASHER 22*9*1.6	2							
49	1	G40027100008	WASHER M8	2							
50	1	G40010100865	BOLT M8*65	2							
51	1	G40031199006	PIN 6,STPRD.STRAIGHT	1							

N:Old $\frac{Yes}{No}$ New, Q:Old $\frac{No}{Yes}$ New, R:Old $\frac{Yes}{Yes}$ New, S:Old $\frac{No}{No}$ New, W:Add, Z:Discontinued, F:Interchangeable by set, K:Q'ty Change
 ++ CONTINUE ++
 (C)Copy Rights YANMAR CO.,LTD.

Fig.11. CONTROL SECTION

(A)=T3250

(B)=

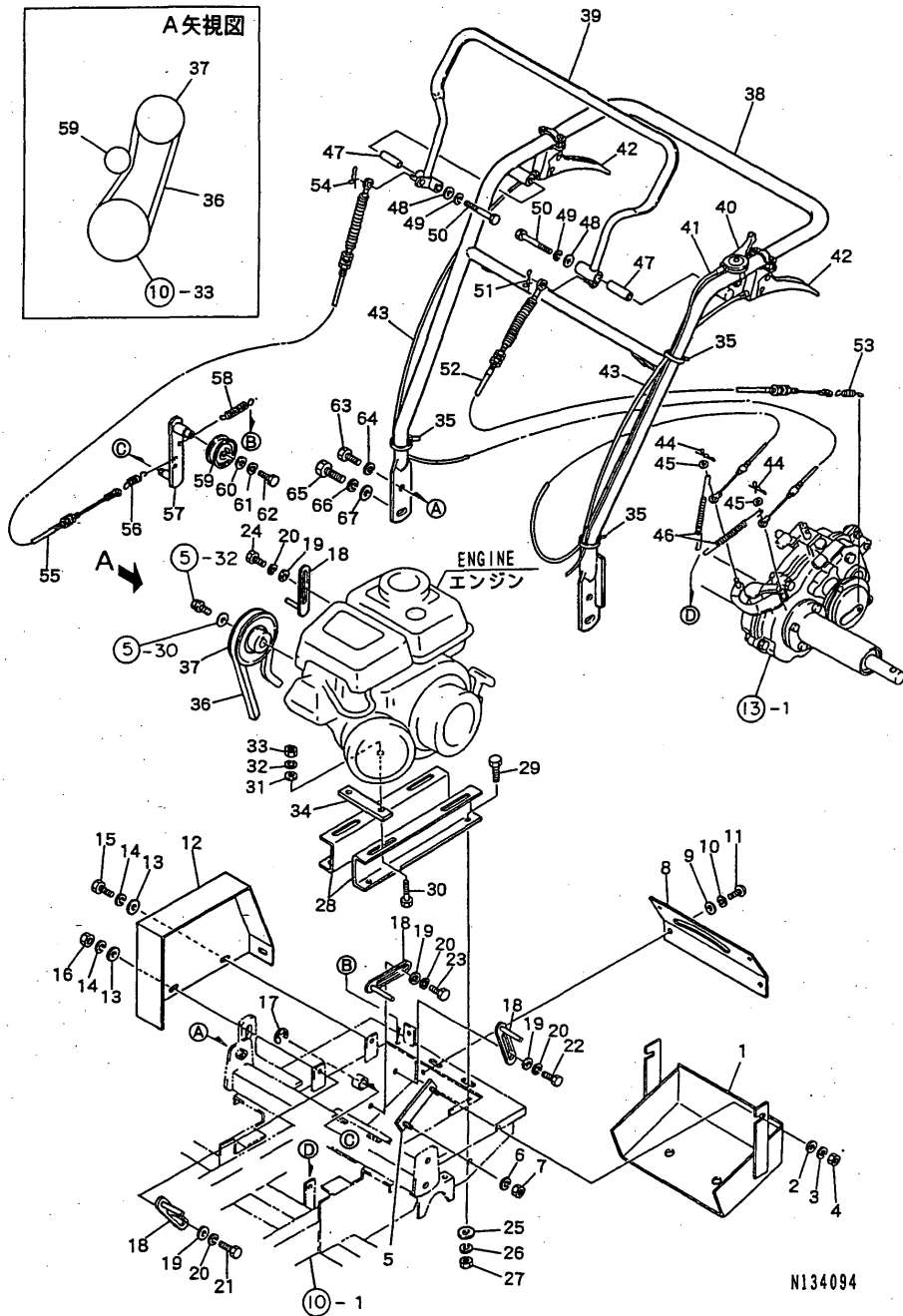
(C)=

(D)=

(E)=

(F)=

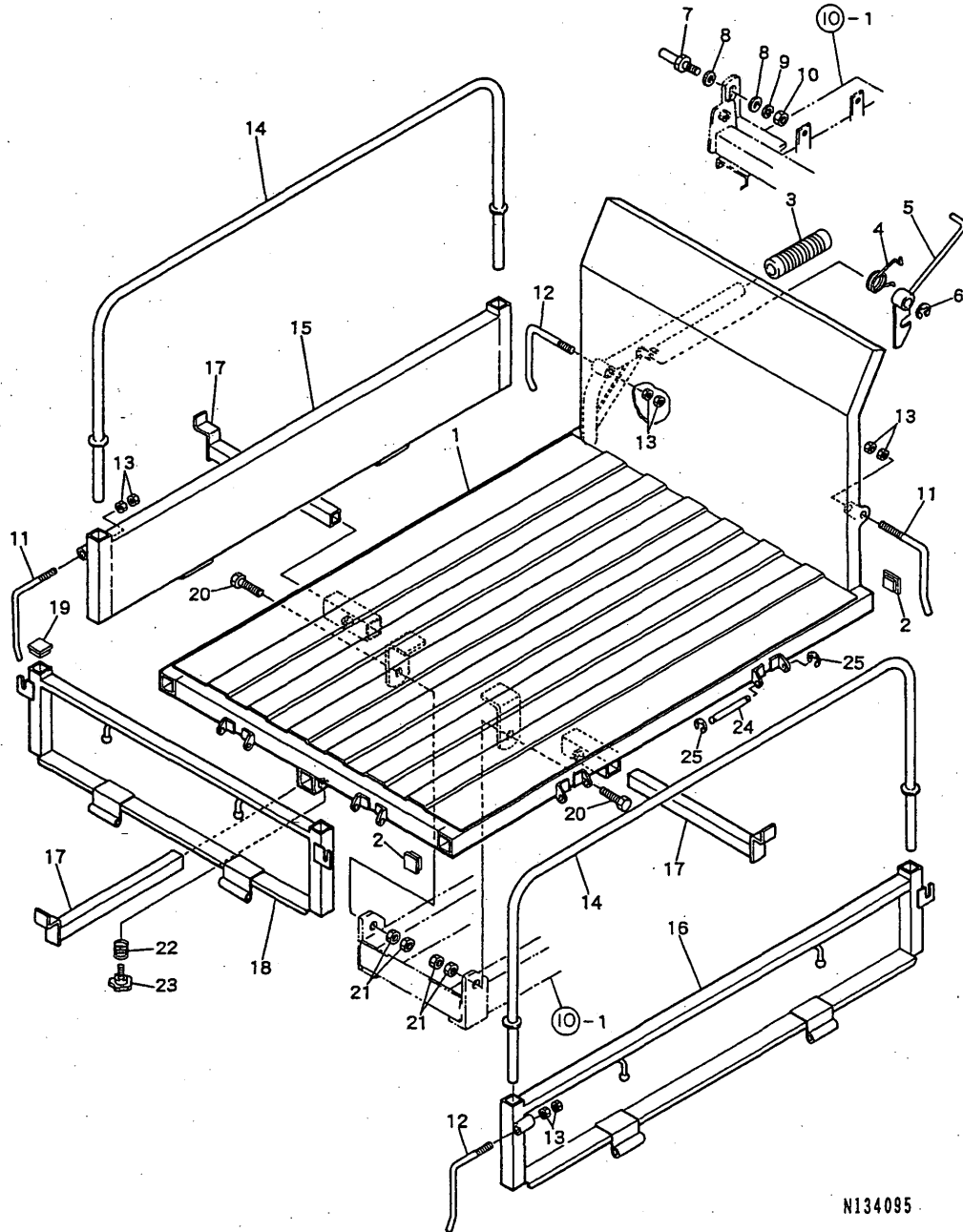
11. CONTROL SECTION



REF.	LEV.	PARTS NO.	DESCRIPTION	QTY						I	R
				(A)	(B)	(C)	(D)	(E)	(F)		
52	1	G46496040600	WIRING	1							
53	1	G46172105000	SPRING	1							
54	1	G40031199006	PIN 6,STPRD.STRAIGHT	1							
55	1	G46496040600	WIRING	1							
56	1	G46172105000	SPRING	1							
57	1	G46492280000	ARM,TRACKSION TENSIO	1							
58	1	G46492100000	SPRING	1							
59	1	G46066110000	PULLEY,TENSION	1							
60	1	G46066070000	WASHER 16*7*1.6	1							
61	1	G40027100006	WASHER M6	1							
62	1	G40010100612	BOLT M6*12	1							
63	1	G40010101025	BOLT M10*25	2							
64	1	G40027100010	WASHER M10	2							
65	1	G40010101225	BOLT M12*25	2							
66	1	G40027100012	WASHER M12	2							
67	1	G40026100012	WASHER M12	2							

Fig.12. PLATFORM CARRIER

12. PLATFORM CARRIER



N134095

(A)=T3250

(B)=

(C)=

(D)=

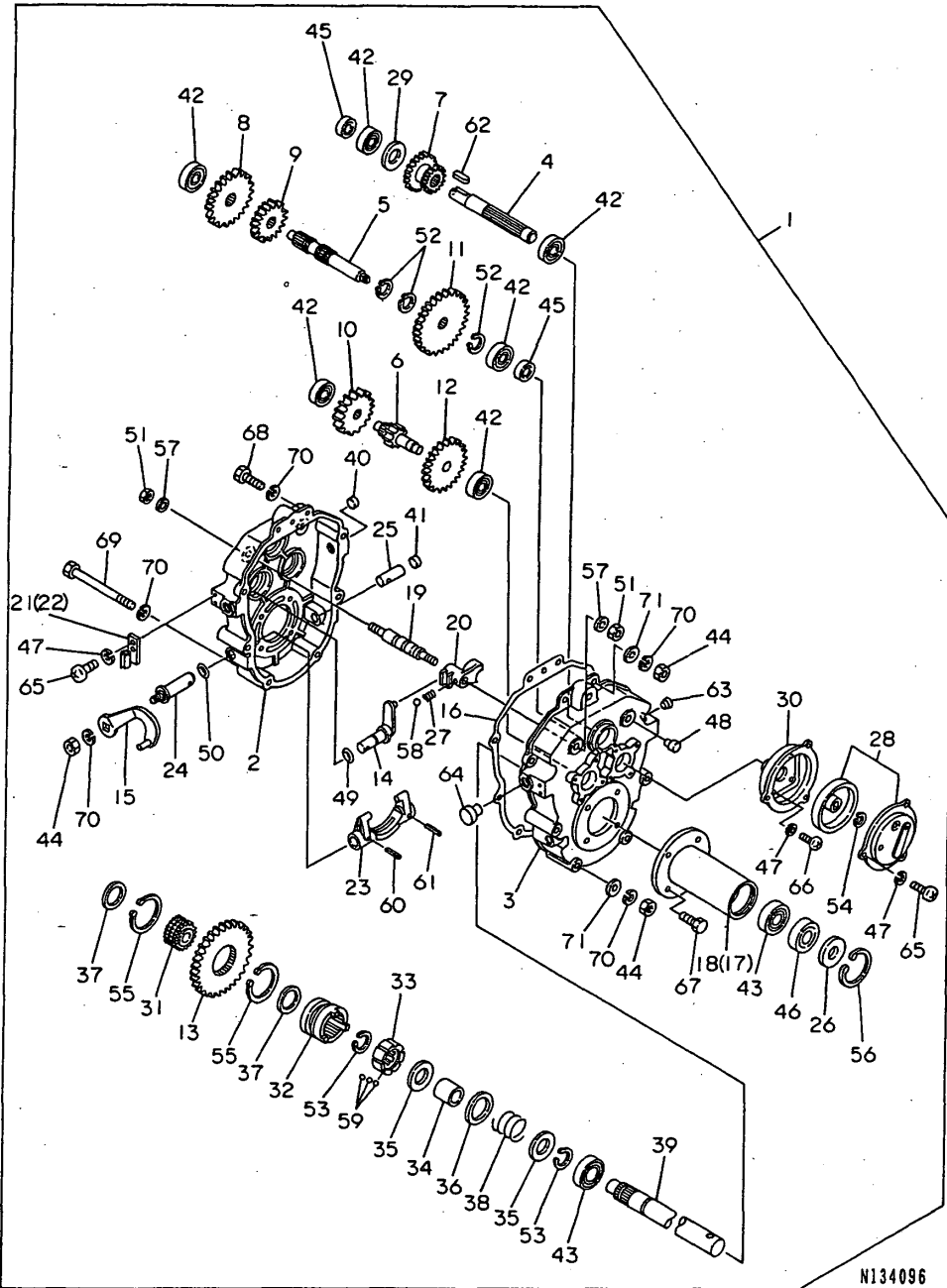
(E)=

(F)=

REF.	LEV.	PARTS NO.	DESCRIPTION	QTY						I	R	
				(A)	(B)	(C)	(D)	(E)	(F)			
1	1	G41415220000	LOADING PALET	1								
2	1	G40705260000	CAP 32*32*1.6	4								
3	1	G47276030000	GLIP25.4(BK)	1								
4	1	G46062104040	SPRING	1								
5	1	G46062393000	LEVER,DUMP HOOK	1								
6	1	G40036800012	RING,STOP E12	1								
7	1	G46062070010	BOLT,DUMP HOOK	1								
8	1	G40026100012	WASHER M12	2								
9	1	G40027100012	WASHER M12	1								
10	1	G40020100012	NUT M12	1								
11	1	G46062392010	HOOK,SIDE DOOR	2								
12	1	G46062392000	HOOK,SIDE DOOR	2								
13	1	G40020100010	NUT M10	8								
14	1	G40725221100	PIPE,SIDE DOOR	2								
15	1	G41415220100	DOOR,SIDE(R)	1								
16	1	G41415220200	DOOR,SIDE(L)	1								
17	1	G41415220400	STOPPER	3								
18	1	G41415220300	DOOR,FRONT	1								
19	1	G40725260000	CAP 25*25*1.6	2								
20	1	G40010111445	BOLT M14*45(8T)	2								
21	1	G40020100014	NUT M14	4								
22	1	G40905220400	SPRING	3								
23	1	G40905260000	BOLT M8*20	3								
24	1	G40855220400	PIN	6								
25	1	G40036500006	RING,STOP E6	12								

Fig.13. TRANSMISSION

13. TRANSMISSION



N134096

(A)=T3250

(B)=

(C)=

(D)=

(E)=

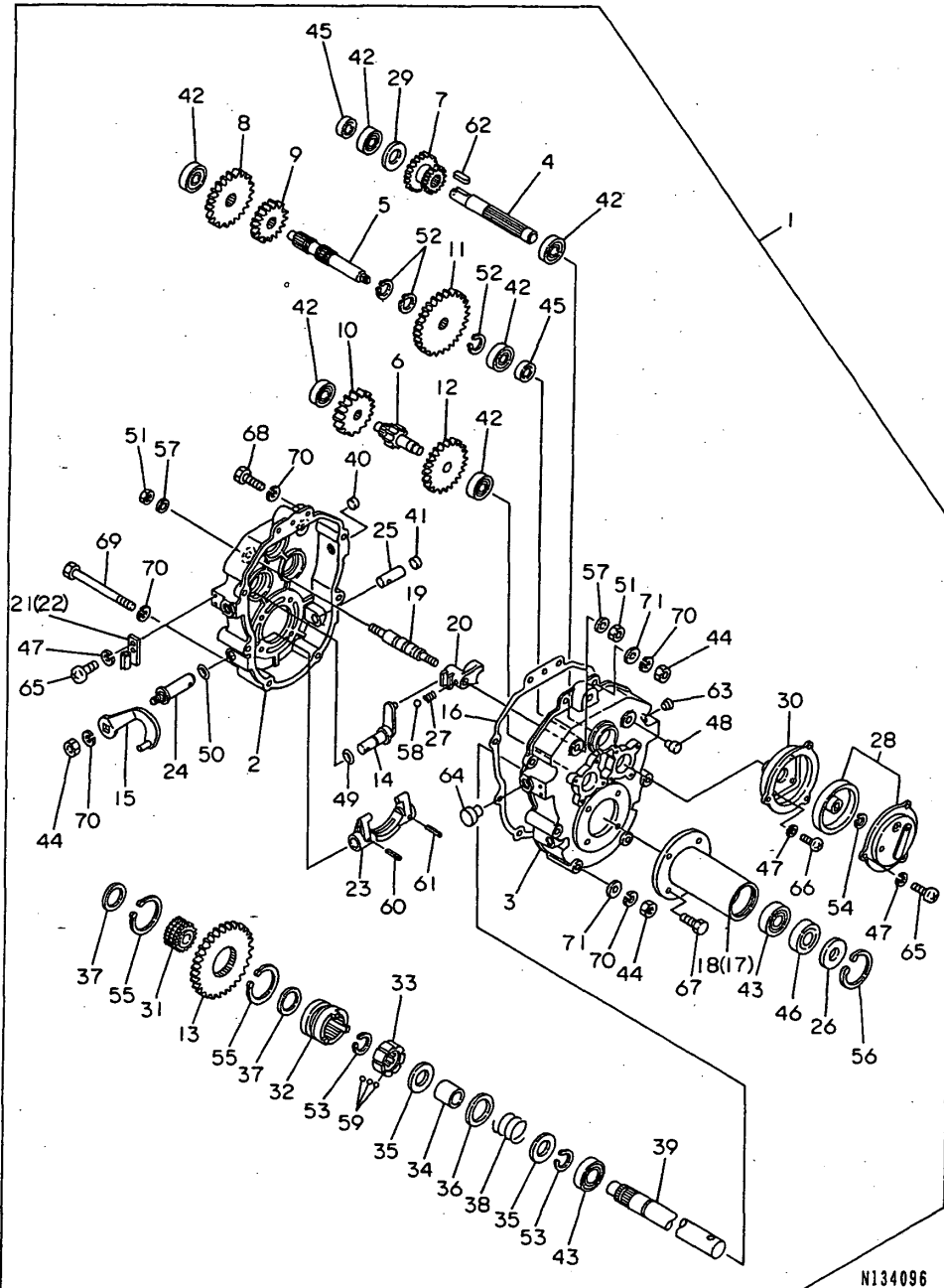
(F)=

REF.	LEV.	PARTS NO.	DESCRIPTION	QTY						I	R
				(A)	(B)	(C)	(D)	(E)	(F)		
1	1	G46496011002	MISSION,TRANS ASSY	1							
2	2	G46496990000	CASE,MISSION (R)	1							
3	2	G46496990010	CASE,MISSION (L)	1							
4	2	G46496990020	SHAFT,IMPUL	1							
5	2	G46496990030	SHAFT,SECOND	1							
6	2	G46496990040	SHAFT,PINION 8T	1							
7	2	G46496990050	GEAR,SLIDE 12T/20T	1							
8	2	G46496990060	GEAR 35T	1							
9	2	G46496990070	GEAR 25T	1							
10	2	G46496990080	GEAR 30T	1							
11	2	G46496990090	GEAR(F43T	1							
12	2	G46496990100	GEAR(R43T	1							
13	2	G46496990110	GEAR 50T	1							
14	2	G46496990120	LEVER,SHIFT	1							
15	2	G46496990130	LEVER,SIDE CLUTCH	2							
16	2	G46496990140	PACKING,GEAR BOX	1							
17	2	G46496990150	CASE,SHAFT(R	1							
18	2	G46496990160	CASE,SHAFT(L	1							
19	2	G46496990170	ROD,SHIFT	1							
20	2	G46496990180	SHIFTER,GEAR	1							
21	2	G46496990190	FITTING,WIRE STOP(R	1							
22	2	G46496990200	FITTING,WIRE STOP(L	1							
23	2	G46496990210	LEVER,SIDE CLUTCH	2							
24	2	G46496990220	LEVER,SHIFT(UP	2							
25	2	G46496990230	LEVER,SHIFT(DOWN	2							
26	2	G46496990240	COVER,OIL SEAL	2							
27	2	G46496990250	SPRING,SHIFT FORK	1							
28	2	G46496990260	BRAKE ASSY	1							
29	2	G46496990270	SPACER	1							
30	2	G46496990280	STAND,FITTING	1							
31	2	G46496990290	BOSS,SPLINE	1							
32	2	G46496990300	SIDE CLUTCH	2							
33	2	G46496990310	GUIDE,BALL	2							
34	2	G46496990320	COLLAR	2							
35	2	G46496990330	COLLAR 1	4							
36	2	G46496990340	RECEIVER,SPRING	2							
37	2	G46496990350	COLLER 2	2							
38	2	G46496990360	SPRING,SIDE CLUTCH	2							
39	2	G46496990370	SHAFT	2							
40	2	G46496990380	PLUG,BORE 15	2							
41	2	G46496990390	PLUG,CLUTCH ROD	2							
42	2	G40040106202	BALL BEARING 6202	6							
43	2	G40040106005	BALL BEARING 6005	4							
44	2	G40020100008	NUT M8	10							
45	2	G46496990400	OIL SEAL TC153007	2							
46	2	G46496990410	OIL SEAL TC254708	2							
47	2	G40027100006	WASHER M6	11							
48	2	G46496990440	PLUG,BORE 10	2							
49	2	G40052100110	O-RING P11	1							
50	2	G40052100140	O-RING P14	1							
51	2	G40020300010	NUT M10	2							

N:Old $\frac{Yes}{No}$ New, Q:Old $\frac{No}{Yes}$ New, R:Old $\frac{Yes}{No}$ New, S:Old $\frac{No}{Yes}$ New, W:Add, Z:Discontinued, F:Interchangeable by set, K:Q'ty Change
 ++ CONTINUE ++
 (C)Copy Rights YANMAR CO.,LTD.

Fig.13. TRANSMISSION

13. TRANSMISSION



(A)=T3250

(B)=

(C)=

(D)=

(E)=

(F)=

REF.	LEV.	PARTS NO.	DESCRIPTION	QTY						I	R
				(A)	(B)	(C)	(D)	(E)	(F)		
52	2	G40036100019	RING,STOP S19	3							
53	2	G40036100025	RING,STOP S25	4							
54	2	G40036100014	RING,STOP S14	1							
55	2	G40036100045	RING,STOP S45	2							
56	2	G46496990450	RING,STOP H47	2							
57	2	G40025100010	WASHER 10	2							
58	2	G40048109998	BALL,IRON 8	1							
59	2	G40048109994	BALL,IRON 4	30							
60	2	G40030300520	PIN,SPRING 5*20	2							
61	2	G40030300420	PIN,SPRING 4*20	2							
62	2	G40300000015	KEY 5*5*20	1							
63	2	G46496990460	PLUG	1							
64	2	G46496990470	PLUG,FUEL	1							
65	2	G40015100610	BOLT M6*10	7							
66	2	G40015100615	BOLT M6*15	4							
67	2	G40010100820	BOLT M8*20	8							
68	2	G40100000016	BOLT M8*30	4							
69	2	G40010100895	BOLT M8*95	4							
70	2	G40027100008	WASHER M8	18							
71	2	G40026100008	WASHER M8	18							

Part Number Index

All parts are stipulated in the order of part numbers.

(Depending on the area in which the part is used.)

This index will display the location of the part according to each part number.

PARTS No. INDEX

PARTS No.	Fig.	Ref.No.
106990-44660	6	22
114250-21290	5	10
114270-01600	1	5
114770-61600	8	5
124060-77680	6	25
160110-92610	3	9
160110-92710	3	11
160120-76940	8	10
		21
160120-92700	3	10
160260-78700	6	26
160341-01950	9	25
160393-55050	6	10
160490-11010	2	7
160490-11120	2	14
160490-11290	2	20
160490-11300	2	21
160490-11310	2	22
160490-12500	4	3
160490-12520	4	4
160490-14200	5	11
160490-14400	5	12
160490-22010	5	20
160490-22300	5	26
160490-23030	5	28
160490-45010	9	40
160490-45140	9	1
160490-45220	9	4
160490-45230	9	3
160490-45240	9	38
160490-56011	7	1
160490-56590	7	10
160490-56600	7	11
160490-59350	6	23
160490-59360	6	24
160490-66020	8	12
160490-66190	8	25
160490-66200	8	28
160490-66211	8	29
160490-76051	9	8
160490-76251	9	9
160490-76511	9	11
160490-76580	9	19
160490-76591	9	21
160490-76600	9	20
160490-76611	9	10
160490-78090	9	27
160490-78230	9	26
160490-78540	9	28
160490-78550	9	29

PARTS No.	Fig.	Ref.No.
160492-56520	7	3
160492-56530	7	4
160492-56540	7	5
160492-56550	7	6
160492-56570	7	8
160492-56581	7	9
160492-56610	7	12
160492-56620	7	14
160492-56630	7	16
160492-66100	8	13
160495-56561	7	7
160495-56600	7	2
160498-01330	2	4
160498-13550	4	10
160498-14050	5	1
160510-02220	1	8
		15
160510-03180	2	3
160510-13200	4	9
160510-14550	5	30
160510-56610	7	13
160510-56620	7	15
160520-03050	2	1
160520-07272	3	7
160520-66291	8	22
160530-21200	5	16
160590-21210	5	17
160610-03050	2	2
160610-04201	2	5
160610-04570	4	1
160610-04620	2	6
160610-12530	4	5
160610-12540	4	6
160610-12550	4	7
160610-21290	5	18
160610-55100	6	11
160610-56630	7	17
160610-56900	7	25
160611-01740	1	19
160611-14560	5	9
160611-77250	9	23
160664-07370	3	8
160664-11100	2	12
160664-11110	2	13
160664-11180	2	15
160664-66220	8	19
160667-56151	7	26
160667-56160	7	27
160667-56750	7	22
160670-66350	8	20

PARTS No.	Fig.	Ref.No.
160690-11221	2	17
160690-11271	2	18
160690-11280	2	19
160690-61301	8	2
160690-61311	8	3
160690-61450	8	4
160690-61600	8	6
160690-76531	9	13
160690-76540	9	14
160690-76561	9	15
160690-76570	9	16
160690-76801	9	12
160692-55300	6	13
160692-56710	7	19
160692-56770	7	23
160692-66051	8	14
160698-76580	9	17
160699-11200	2	16
160700-78040	9	33
160700-78050	9	34
160700-78720	9	35
160708-55150	6	12
160710-55061	6	3
160710-55360	6	16
160710-55370	6	17
160710-55382	6	18
160710-55390	6	19
160710-56710	7	20
160762-12050	4	2
160769-56720	7	21
160793-78010	9	32
160810-21290	5	31
160991-07260	3	6
181130-56640	7	18
181230-56380	7	24
760490-01500	1	10
760490-01562	1	1
760490-21700	5	13
760490-22500	5	22
760490-55700-1	6	1
G40010100612	11	62
G40010100816	11	15
		24
G40010100818	11	23
G40010100820	11	29
	13	67
G40010100845	11	30
G40010100865	11	50
G40010100895	13	69
G40010101025	11	63

PARTS No.	Fig.	Ref.No.
G40010101225	11	65
G40010111225	10	16
G40010111445	12	20
G40015100610	13	65
G40015100615	13	66
G40020100008	10	23
		34
	11	4
		7
		16
		27
		33
	13	44
G40020100010	10	31
	12	13
G40020100012	12	10
G40020100014	12	21
G40020100016	10	6
G40020300010	13	51
G40025100010	13	57
G40026100006	11	9
		45
G40026100008	11	2
		13
		19
		25
		31
	13	71
G40026100010	10	21
		29
G40026100012	11	67
	12	8
G40027100006	11	10
		61
		47
G40027100008	10	24
	11	3
		6
		14
		20
		26
		32
		49
	13	70
G40027100010	10	30
	11	64
G40027100012	10	15
	11	66
	12	9
G40030300325	10	36

PARTS No. INDEX

PARTS No.	Fig.	Ref.No.
G40030300420	13	61
G40030300520	13	60
G40030300525	10	37
G40031199006	11	44
		51
		54
G40031199010	10	19
G40031311055	10	17
G40036100014	13	54
G40036100019	13	52
G40036100025	13	53
G40036100045	13	55
G40036500006	12	25
G40036800012	11	17
	12	6
G40040106005	13	43
G40040106202	13	42
G40048109994	13	59
G40048109998	13	58
G40052100110	13	49
G40052100140	13	50
G40052300450	10	12
G40080300035	11	36
G40100000015	11	21
G40100000016	13	68
G40100000017	10	27
	11	22
G40100000060	10	22
G40101008105	10	26
G4010146005A	10	10
G40160000616	11	11
G40160000830	10	35
G40300000015	10	32
	13	62
G40329060000	11	35
G40701121000	11	1
G40701121100	11	5
G40705260000	12	2
G40725221100	12	14
G40725260000	12	19
G40850160100	10	4
G40855220400	12	24
G40905220400	12	22
G40905260000	12	23
G41400120200	10	7
G41410020000	10	1
G41410120000	10	8
G41410120100	10	18
G41411120000	11	12
G41412220000	11	37

PARTS No.	Fig.	Ref.No.
G41415220000	12	1
G41415220100	12	15
G41415220200	12	16
G41415220300	12	18
G41415220400	12	17
G41416020000	11	38
G41416020100	11	39
G41416020200	11	47
G41500120000	10	13
G41500120100	10	14
G46006030000	10	28
G46012720000	11	34
G46016511000	10	11
G46062070010	12	7
G46062104010	11	46
G46062104040	12	4
G46062370010	11	18
G46062392000	12	12
G46062392010	12	11
G46062393000	12	5
G46066043000	11	41
G46066070000	11	60
G46066110000	11	59
G46172105000	11	53
		56
G46376512000	10	3
G46492070000	10	20
G46492100000	11	58
G46492280000	11	57
G46492300010	10	33
G46492330001	10	38
G46492650000	11	8
G46494950000	10	25
G46496011002	13	1
G46496040022	11	43
G46496040600	11	52
		55
G46496130000	11	42
G46496203000	10	5
G46496990000	13	2
G46496990010	13	3
G46496990020	13	4
G46496990030	13	5
G46496990040	13	6
G46496990050	13	7
G46496990060	13	8
G46496990070	13	9
G46496990080	13	10
G46496990090	13	11
G46496990100	13	12

PARTS No.	Fig.	Ref.No.
G46496990110	13	13
G46496990120	13	14
G46496990130	13	15
G46496990140	13	16
G46496990150	13	17
G46496990160	13	18
G46496990170	13	19
G46496990180	13	20
G46496990190	13	21
G46496990200	13	22
G46496990210	13	23
G46496990220	13	24
G46496990230	13	25
G46496990240	13	26
G46496990250	13	27
G46496990260	13	28
G46496990270	13	29
G46496990280	13	30
G46496990290	13	31
G46496990300	13	32
G46496990310	13	33
G46496990320	13	34
G46496990330	13	35
G46496990340	13	36
G46496990350	13	37
G46496990360	13	38
G46496990370	13	39
G46496990380	13	40
G46496990390	13	41
G46496990400	13	45
G46496990410	13	46
G46496990440	13	48
G46496990450	13	56
G46496990460	13	63
G46496990470	13	64
G46666132000	11	40
G46744290150	11	28
G46746230100	10	2
G47022200010	11	48
G47276030000	12	3
G48501081000	10	9

PARTS No.	Fig.	Ref.No.
-----------	------	---------



YANMAR CO., LTD.